

United Coatings (UCC)

"A Division of Earl Industries"

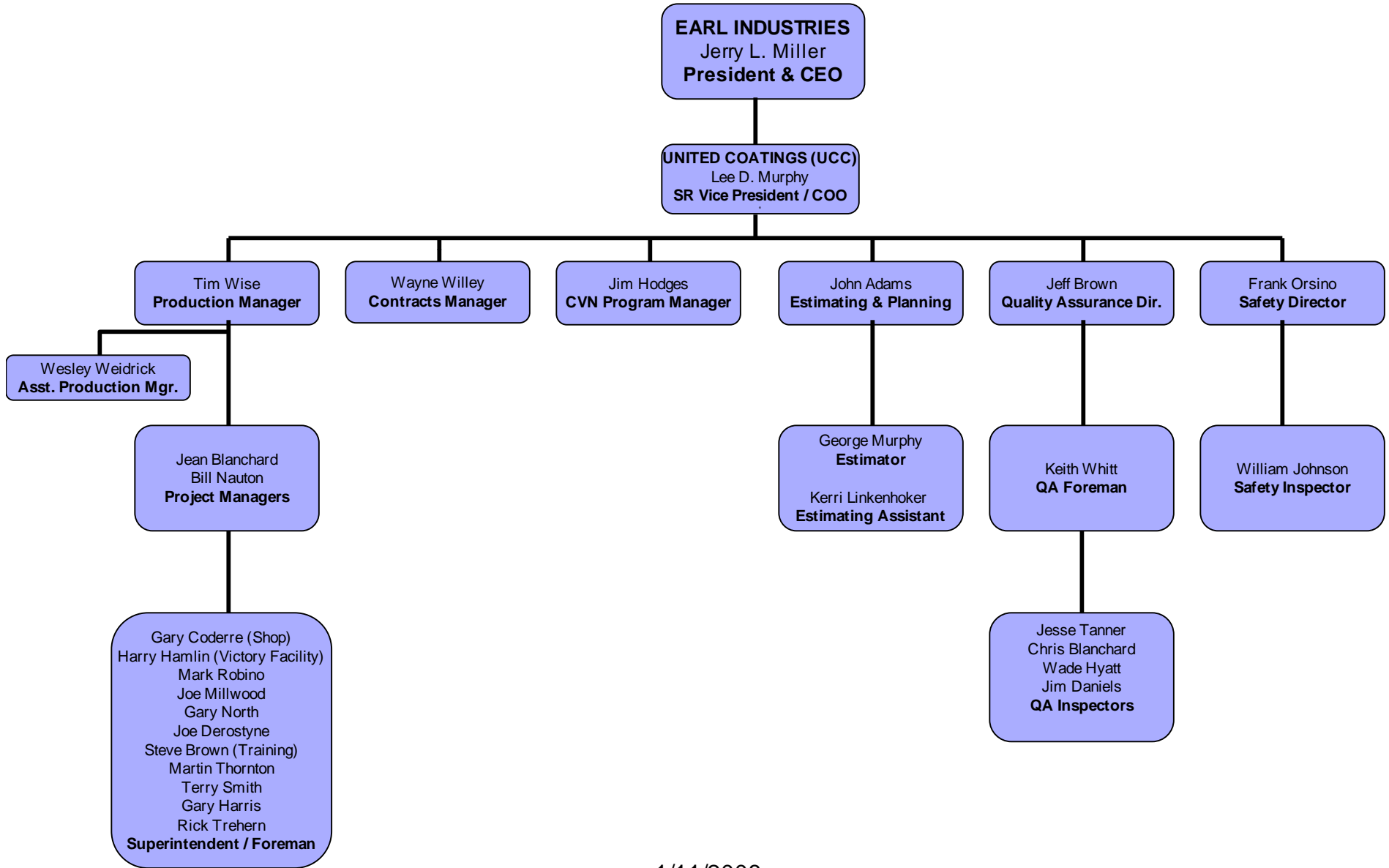
"The Industry Leader"



United Coatings “Company Profile”

- United Coatings (UCC), a division of Earl Industries, is a licensed full service marine, commercial, and industrial coatings contractor located in Portsmouth, Virginia, and services the entire continental United States. On the marine side, UCC has performed surface preparation and coatings application on almost every class of ship in the modern Navy, from Tug Boats and Submarines to multi-million dollar preservation contracts on Aircraft Carriers. In the industrial arena, UCC has performed this same type of work in Chemical Plants, Power Plants, Airports, Municipal Water Authorities and numerous other facilities.
- UCC offers the latest innovative services in surface preparation such as Ultra High Pressure (UHP) Water Blasting and coatings applications for example, Plural Component Pumps. United Coatings is licensed by the state of Virginia for lead based coatings removal and abatement.
- United Coatings is characterized by an experienced and aggressive management team, supported by an equally skilled and motivated work force. Although UCC was incorporated in 1992, each member of the management staff has a minimum of twenty years experience in different facets of the marine and industrial coatings arena. As a matter of company policy the work force is continuously schooled on safety and techniques to enhance the quality and performance of our work. This company commitment to training and safety has paid off with higher productivity, superb quality, and a safer work environment for all our employees. We are committed to customer satisfaction, employee safety, the protection of our environment, and investing in our company’s future and the future of our employees. All of our equipment is state of the art and meets or exceeds all OSHA, NIOSH, and EPA Pollution Abatement requirements.
- As a division of Earl Industries, United Coatings maintains its long standing qualification under ISO 9002. It currently holds a QP1 and QP2 certification with “The Society for Protective Coatings” (SSPC) in the areas of the SSPC Painting Contractor Certification Program (PCCP). In addition United Coating maintains its affiliation and active involvement in the research and development of industry related training and procedural methodology, such as the Plural Component Equipment Operator Training and Certifications, Water-Jetter Certification Programs, and countless others.

“United Coatings Organization”





UCC Mission Statement in Action: “Highly Trained and Experienced Management / Workforce”

Timothy Wise, Production Manager

- Manages Multiple Preservation Projects Simultaneously (\$0.5–20M)
- Monitors and Maintains Budgets and Schedules
- Interfaces with Customers’ and In-house Management Teams on Contractual and Scheduling Issues
- Maintains and Manages a Trained and Qualified Workforce
- Assigns Project Management Teams
- Provides Equipment, Material, and Labor Support to Multiple Projects
- Proficient with Contract Negotiations and Specification Evaluation
- Estimates, Plans, Schedules and Provides Cost Proposals for Prospective Preservation Contracts
- Establishes and Implements New Company Marketing Strategies towards Innovation of Processes and Increased Revenue Growth

Jean Blanchard, Senior Project Manager

- Interfaces with Customers and In-House Management Teams on Contractual, Logistics Support Issues
- Accomplishes Contract Estimates, Establishes Budgets and Formulates Preliminary / Post Production Schedules
- Track Projects’ Costs and Budgets
- Compose Technical Reports and Procedures
- Proficient with Contract and Specification Evaluation and Interpretation

Jeffrey Brown, Quality Control Manager

- Liaisons with Customers’ and In-house Management Teams on Quality Control Issues and Specification Interpretations
- Maintains and Manages a Trained and Certified Workforce
- Polices all Company Personnel concerning Required Training and Qualifications
- Assigns Quality Assurance Inspector Teams to Active Work
- Ensures all Contractually Required Documentation is Prepared, Audited and Submitted
- Conducts all Formal and Informal Internal Quality Control Audits
- Proficient with Contract and Specification Evaluation & Interpretation
- Maintains and Updates Company’s Quality Control Manuals, Equipment and Reference Library

Frank Orsino, Safety Director

- Liaisons with Customers’ and In-house Management Teams on all Safety, Health & Environmental Issues and Concerns
- Maintains and Manages a Trained and Certified Safety Inspection Team
- Conducts, Maintains and Records all Company Personnel Required Training and Qualifications
- Assigns Safety & Health Inspector Teams to Active Work
- Manages and Submits all Contractually required Safety, Health and Environmental Documentation (i.e. Licenses, Certificates of Insurance, Procedures)
- Conducts all Formal and Informal Internal Safety Program Related Audits
- Proficient with Contract and Specification Evaluation & Interpretation
- Maintains and Updates Company’s Safety and Health Program Manuals, Equipment and Reference Library



Nuclear, Fossil Fuel and Industrial Plants Accomplishments & Experience

<u>Facility Type</u>	<u>Total #</u>	<u>Description of Work Experience</u>
■ Nuclear Fuel	24	Abrasive Blast and Coat Circulating Water Intake / Discharge Systems, UHP Turbine Rotors & Components, Abrasive Blast Support Equipment & Components, Glass Bead Blast Electric Motor Stators
■ Fossil Fuel	44	Abrasive Blast or HP Wash and Coat Circulating Water Intake / Discharge Systems, UHP or Abrasive Blast Support Equipment & Components
■ Industrial Plants	2	UHP or HP Pressure Wash LNG Tanks and Coat, UHP and Power Tool Prep Boiler Precipitators, Piping, Turbines and Misc. Plant Support Equipment and Coat

Technical Approach – “Nuclear Plants”

Maintain Daily Updates in Plant Safety Instructions & Training
 Pre-job Development of Job Site JHA (Job Hazardous Analysis)
 Provide Workforce with Certified Job Skills and Fundamentals Training
 Manage for Customers Satisfaction & Quality 1st

BG&E - Calvert Cliffs	18-Sep-2000	31-Oct-2000	Misc	Pressure Wash / Spot Power Tool (SSPC-SP11) Two (2) Water Tanks
	4-Feb-2003	10-Apr-2003	Misc	Prepare / Preserve Fourty-Seven (47) Trash Racks (CMP / Bio-Clean) Abrasive Blast / Apply Three (3) Coats Devcon on Equalization Tank #2
Constellation Energy - Brandon Shores	14-Apr-2004	12-May-2004	Equalization Tank #2	Abrasive Blast / Coat Clarifiers #1 & #2 Apply Two (2) Coats Chemical Epoxy on walls, ceiling and floor in Wagner Rm. Blast / Coat Intake Cavities and Circulating Water Tunnels #21, 22, & 25 (CMP / Bio-Clean) Blast / Coat Six (6) Tunnels and Intake Bays (CMP / Bio-Clean) Blast / Coat Three (3) Circulating Water Tunnels and Intake Bays #23, 24, & 26 (CMP / Bio-Clean) Power Tool / Coat CP Crane Water Line Abrasive Blast / Intake System / Apply Four (4) Coat System (CMP / Bio-Clean) Abrasive Blast / Circulating Water Intake System / Apply Four (4) Coat System (CMP / Bio-Clean) UHP Hand-Lance / Debris Filters / Apply Four (4) Coat System (CMP / Bio-Clean) HP Wash / Recoat / Apply Vinyl Bioclean System Pressure Wash / Recoat Circulating Water System (CMP / Bio-Clean) Remove Asbestos using UHP Hand-Lance on One (1) HP Turbine Gingerbread Cover UHP Hand-Lance One (1) LP Rotor & Components for SL2-11 Outage UHP Hand-Lance One (1) LP Rotor & Components UHP Hand-Lance Unit #3 HP Turbine & UHP Hand-Lance Two (2) LP Rotors & Components UHP Hand-Lance Turbine Components UHP Hand-lance Unit #1 LP Turbine Rotor UHP Hand-lance Unit #3 LP Turbine Rotor Abrasive Blast Stator Exterior with Steel Shot / Interior with Glass Bead Abrasive Blast Stator Exterior with Steel Shot /
	17-May-2004	20-Sep-2004	Clarifiers #1 & #2	
Constellation Energy - Calvert Cliffs	23-Dec-2005	15-Feb-2006	Wagner Room	
	24-Feb-2005	10-Mar-2005	Misc	
Constellation Energy - Chase, MD	20-Feb-2006	20-Mar-2006	Misc	
	19-Feb-2007	12-Mar-2007	Misc	
CP&L - Brunswick	2-Mar-2006	4-Mar-2006	CP Crane Water Line	
	12-Feb-1995	28-Feb-1995	Unit #2	
FP&L - St. Lucie	14-Oct-1996	31-Oct-1996	Unit #1	
	15-Sep-1997	27-Sep-1997	Unit #1 & #2 - Debris Filter	
	3-Mar-2002	24-Mar-2002	Unit #1	
	13-Feb-2005	24-Mar-2005	Unit # 2 HP Turbine - Blast Tec Abatement	
FP&L - Turkey Point	31-Oct-1997	14-Nov-1997	LP Rotor	
	1-Nov-1998	5-Dec-1998	Unit #1	
Indian Point 2 - Consolidated Edison	9-Sep-1999	25-Sep-1999	Unit #3	
	24-Sep-2000	5-Oct-2000	Unit #4	
Palo Verde Nuclear Generating Station - Phoenix	27-Apr-1997	19-May-1997	Turbine Components	
	23-Sep-1996	30-Sep-1996	Unit #1	
	10-Feb-1997	2-Mar-1997	Unit #3	
Surry Power	4-Apr-1999	2-Apr-1999	Stator #1	

Technical Approach-"Fossil Fuel & Industrial Plants"

Maintain Daily Updates in Plant Safety Instructions & Training

Pre-job Development of Job Site JHA (Job Hazardous Analysis)

Provide Workforce with Certified Job Skills and Fundamentals Training

Manage for Customers Satisfaction & Quality 1st

Boston Edison	10-Mar-1998	15-Mar-1998 Misc	Abrasive Blast / Intake System / Apply Four (4) Coat System (CMP / Bio-Clean)	
Dominion Energy - Brayton Point	19-Oct-2008	26-Oct-2008 Unit # 2	Spot Blast / Wash / Coat Intake Bays, Tunnels (CMP / Bio-Clean)	
	18-Apr-2010	1-May-2010 Unit # 3	Blast / Recoat Two (2) Intake Bays & Two (2) Tunnels (CMP / Bio-Clean)	
	19-Apr-2011	23-Apr-2011 Unit # 3	Pressure Wash / Coat Unit #3 Tunnel (CMP / Bio-Clean)	
	2-Mar-2012	11-Mar-2012 Unit # 1	Blast / Coat Two (2) Tunnels and One (1) Intake Bay (CMP / Bio-Clean)	
Dominion Energy - Salem Harbor	16-Nov-2008	19-Nov-2008 Unit # 2	Pressure Wash / Coat Intake Bay (CMP / Bio-Clean)	
	19-Mar-2010	24-Mar-2010 Unit # 2	Pressure Wash / Coat Intake Tunnel (CMP / Bio-Clean)	
	31-Oct-2010	5-Nov-2010 Unit # 1	Pressure Wash / Coat Interior Tunnel Surfaces (CMP / Bio-Clean)	
Dominion Power - Cove Point LNG	11-Oct-2009	2-Dec-2009 LNG Tanks #101-FB / FC	Pressure Wash / Coat LNG Tanks 101-FB & 101-FC	
	1-Nov-2009	5-Nov-2009 Turbine "C"	Power Tool / Coat Turbine "C"	
	11-Apr-2010	31-May-2010 Liquifier Area	Pressure Wash / Power Tool / Coat Liquifier Area	
		Turbines "A & C"	Power Tool / Coat Turbines "A & C"	
	23-May-2010	1-Jan-2011 Maintenance Painting	Misc. Painting Through-out Plant	
	20-Jun-2010	20-Sep-2010 LNG Tanks #101 FB/FC	Sweep Blast Tank Base / Caulk / Apply Two (2) Coats Paint on LNG Tanks 101-FB & 101-FC	
	6-Sep-2010	6-Dec-2010 Man Hole / Fire Plugs	Pressure Wash / Paint Man Holes / Fire Plugs	
	20-Sep-2010	19-Oct-2010 Tank "B"	Re-Caulk / Touchup Paint Tank "B" Riser	
2-Nov-2010	21-Dec-2010 Block Walls	Pressure Wash / Apply Two (2) DTM Acrylic to Block Walls		
Doswell Limited Partnership	7-Nov-2010	1-Dec-2010 Turbine	Pressure Wash / Power Tool / Apply one (1) Spot Coat and Two (2) Full Coats to Turbine Interior & Exterior	
	22-Apr-2009	28-Apr-2009 Process Sump #6	Abrasive Blast / Apply Elastiliner II (40 Mil) System	
	Georgia Power - Plant Scherer, Atlanta	13-Feb-2001	23-Feb-2001 #3 Precip & Bolier	UHP Prep #3 Precipitator & Boiler
	28-Mar-2002	28-Mar-2002 #4 Radiant Wall Stitch Welds	UHP Prep #4 Radiant Wall Stitch Welds	
Keyspan - Port Jefferson	30-Jan-2011	4-Apr-2011 Units #3, #4	Abrasive Sweep Blast / Coat Units #3 & #4 (CMP / Bio-Clean)	

Technical Approach-"Fossil Fuel & Industrial Plants"

Maintain Daily Updates in Plant Safety Instructions & Training

Pre-job Development of Job Site JHA (Job Hazardous Analysis)

Provide Workforce with Certified Job Skills and Fundamentals Training

Manage for Customers Satisfaction & Quality 1st

Keyspan Energy - Glenwood Station	7-May-2001	17-May-2001	Units #4, #5	Pressure Wash / Sweep Blast / Coat Circulating Water Intake System (CMP / Bio-Clean)
Keyspan Energy - Northport	24-Apr-2000	7-May-2000	Unit #2	Pressure Wash / Topcoat Intake System (CMP / Bio-Clean)
	7-Oct-2002	14-Oct-2002	Unit #3 (1st Avail)	HP Wash / Topcoat Intake Tunnels (CMP / Bio-Clean)
	18-Nov-2002	24-Nov-2002	Unit #3 (2nd Avail)	HP Wash / Topcoat Intake Tunnels (CMP / Bio-Clean)
Long Island Light - Glenwood Power Station	13-Mar-1995	3-Apr-1995	Unit #3	Abrasive Blast / Intake System / Apply Four (4) Coat System (CMP / Bio-Clean)
Long Island Light - Northport Power Station	5-Jun-1995	9-Jun-1995	Misc	Abrasive Blast / Intake System / Apply Four (4) Coat System (CMP / Bio-Clean)
	4-Mar-1998	12-Mar-1998	Unit #1	Abrasive Blast / Intake System / Apply Four (4) Coat System (CMP / Bio-Clean)
New England Power - Brayton Point	6-Mar-1995	31-Mar-1995	Unit #3	Abrasive Blast / Intake System / Apply Four (4) Coat System (CMP / Bio-Clean)
	4-May-1998	17-May-1998	Unit #2	Abrasive Blast / Circulating Water Tunnel System / Apply Five (5) Coat System (CMP / Bio-Clean)
New England Power - Narragansett	30-Mar-1995	9-May-1995	Units #9, #10, #11	Abrasive Blast / Circulating Water Tunnel System / Apply Five (5) Coat System (CMP / Bio-Clean)
	12-Apr-1996	6-Jun-1996	4 - 15' X 42" Pipe	Abrasive Blast / Four (4) Sections of 15' X 42" Pipe / Apply Four (4) Coat System (CMP / Bio-Clean)
	13-Oct-2001	2-Nov-2001	Unit #11	HP Wash / Topcoat Intake Tunnels (CMP / Bio-Clean)
	11-Feb-2002	15-Feb-2002	Unit #10	HP Wash / Topcoat Intake Tunnels (CMP / Bio-Clean)
	20-Apr-2002	29-Apr-2002	Unit #9	HP Wash / Topcoat Intake Tunnels (CMP / Bio-Clean)
New England Power - Salem Harbor	7-Nov-1997	12-Nov-1997	Unit #1	Abrasive Blast / Circulating Water Tunnel System / Apply Five (5) Coat System (CMP / Bio-Clean)
	13-Mar-1998	18-Mar-1998	Unit #2	Abrasive Blast / Circulating Water Tunnel System / Apply Five (5) Coat System (CMP / Bio-Clean)
	21-Apr-1998	1-May-1998	Unit #3	Abrasive Blast / Circulating Water Tunnel System / Apply Five (5) Coat System (CMP / Bio-Clean)
Rock Springs Generation Facility	7-Mar-2006	10-Mar-2006	Injection / Waste Water Tank	Pressure Wash for Visual Inspection
Siemen's Power Corporation - Holtsville, NY	24-Oct-1996	26-Oct-1996	Turbine Plenum	Apply Two (2) Coats Glidden Paint on Turbin Plenum
Virginia Power Company - Chesapeake	29-Mar-1997	31-Mar-1997	Saltwater Cooling Pipe	Solvent Clean / Coat Saltwater Cooling Piping
Panda - Rosemary Corporation	10-Mar-1996	24-May-1996	Misc	Abrasive Blast / Coat Misc. Plant Equipment
Virginia Power - Innsbrook Tech Center,				

Material & Equipment Assets: “Extensive Inventory”

Inventory Quantity	Equipment Description	Inventory Quantity	Equipment Description
4	T-28 Blast Pots	5	Dehumidifiers HC 9000 CFM
4	T-8 Blast Pots (Mobile)	1	Dehumidifier HCD 4500 CFM
7	600# Blast Pots (Mobile)	2	Dehumidifiers 500 CFM
1	Sponge Jet Blast Pot / Shaker Separator	3	A/C & Heater Units 700 CFM
7	Storage Silos 32 Tons	23	Portable Power Disconnects (With 110V Trans.)
1	Storage Silos 32 Tons	28	Conex Boxes
6	Vacuums 400 CFM (Air)	7	Paint Storage Conex Boxes
5	Vector Vacuums 2367 CFM (Mobile Electric)	3	Graco Extreme Pumps (Plural Component)
2	Vector Vacuums 2367 CFM (Mobile Diesel)	4	WIWA Pumps (Plural Component)
1	Vector Vacuum 3510 CFM (Mobile Diesel)	24	Paint Spray Pumps (45:1, 56:1, 64:1, 68:1, 74:1)
20	Vac Bottles	3610	10' Bed Springs
6	After Coolers 3200 CFM	1422	7' Bed Springs
3	After Coolers 1300 CFM (With Desiccant Dryer)	3	UHP Pumps (Diesel) (55,000 PSI)
2	Desiccant Blast Air Dryer Bottles	16	UHP Pumps (Diesel) (40,000 PSI)
10	Fuel Tanks (Diesel)	2	UHP Pumps (Electric) (40,000 PSI)
2	Dust Collectors 35,000 CFM (Electric)	11	UHP Hydro-cats
2	Dust Collectors 20,000 CFM (Electric)	11	UHP Guzzlers
2	Dust Collectors 20,000 CFM (Mobile Diesel)	11	UHP Containment Hot Tubs
2	Dust Collectors 5,000 CFM (With 900 CFM Vac)	8	UHP Collection Tubs
1	Dust Collector 5,000 CFM (No Vac)	30	UHP Hand-lances / Tumble Boxes



Company & Individual Current Industry Certifications:

- **SSPC QP1** (Field Application of Coatings Complex Structures) Company
- **SSPC QP2** (Industrial Hazardous Paint Removal) Company
- **SSPC C3 & C5** (Supervisor / Competent Person Deleading of Industrial Structures) Individual
- **SSPC C7** (Dry Abrasive Blaster Certification) Individual
- **SSPC C14 MPCAC** (Marine Plural Component Application Certification) Individual
- **SSPC C13** (UHP Waterjetting Certification) Individual
- **SSPC QCS** (Quality Control Supervisor) Individual
- **NACE CIP** (Level 1 -thru- Pier Review) Individual



Company's Current Business Licenses :

- **Contractor "Class A"** (Virginia & Florida)
- **Lead Abatement** (Virginia & Maryland)